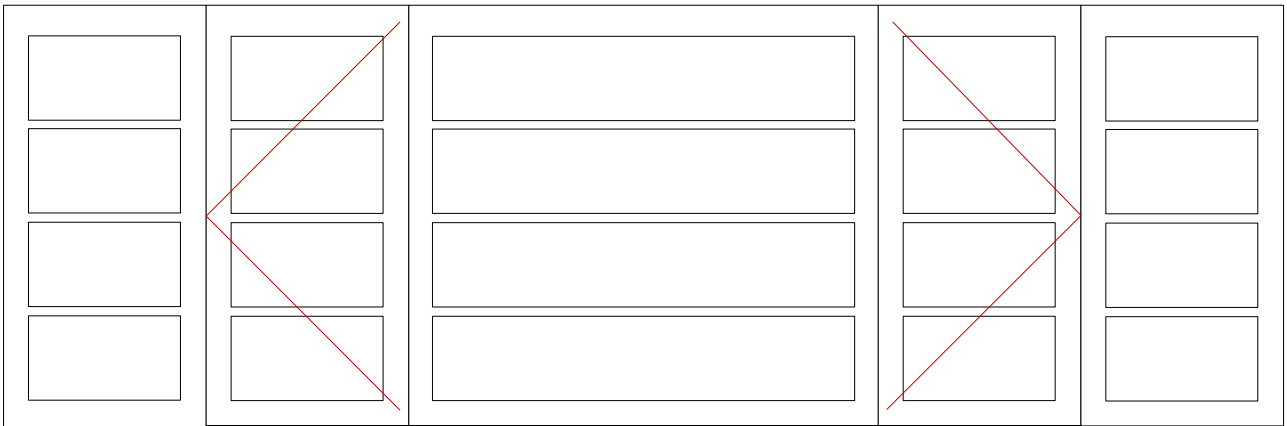




# Shrewsbury Park Residents' Association

## Window Type 'D' Newnham House



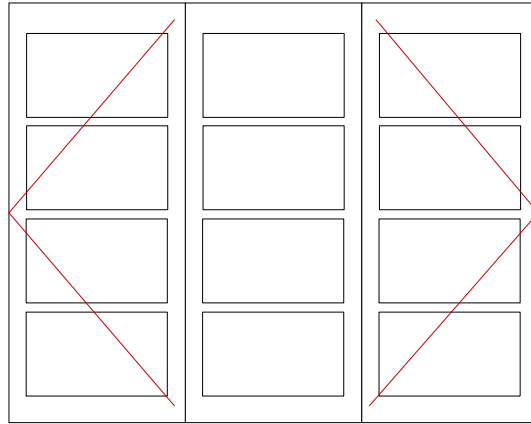
Front Elevation First Floor Bay – Bedroom 1  
(5 sealed units, sub-divided by three rows of 22mm internal glazing bars)



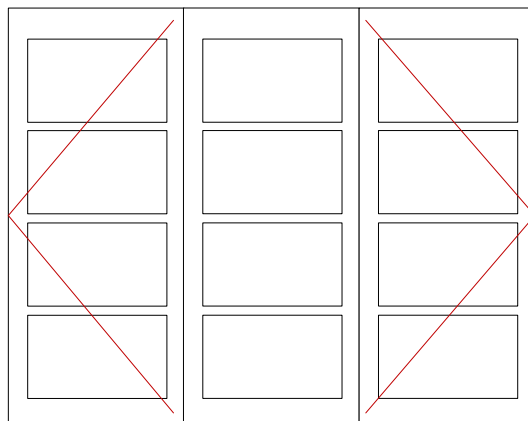
Front Elevation Ground Floor Bay – Lounge  
(5 sealed units, sub-divided by four rows of 22mm internal glazing bars)



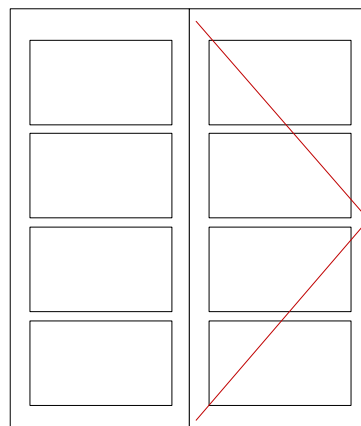
## Shrewsbury Park Residents' Association



Front Elevation First Floor – Bedroom 5  
(3 sealed units, sub-divided by three rows of 22mm internal glazing bars)



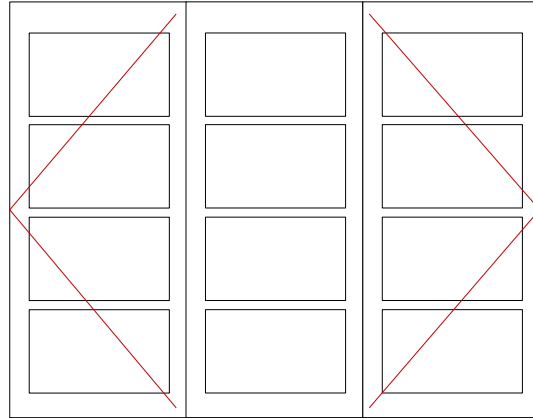
Rear Elevation First Floor – Bedroom 2 and 5  
(3 sealed units, sub-divided by three rows of 22mm internal glazing bars)



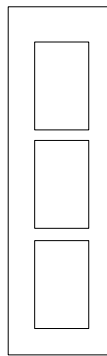
Rear Elevation First Floor – Bedroom 4  
(2 sealed units, sub-divided by three rows of 22mm internal glazing bars)



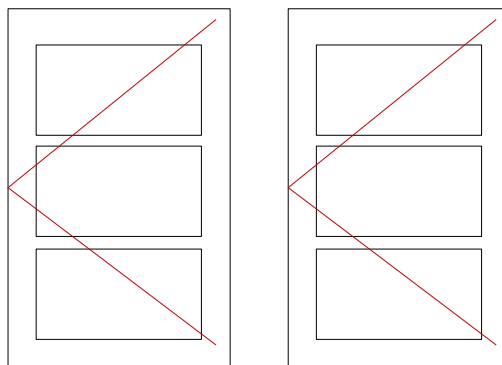
## Shrewsbury Park Residents' Association



Flank Elevation Ground Floor – Kitchen  
(3 sealed units, sub-divided by three rows of 22mm internal glazing bars)



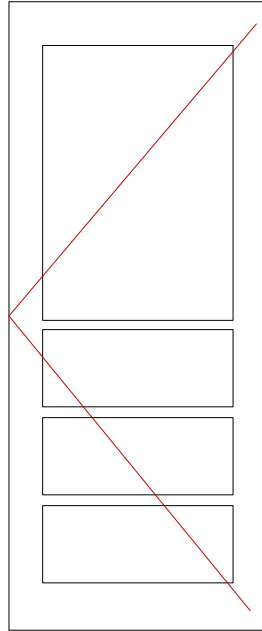
Flank Elevation Ground Floor – Kitchen Larder (fixed)  
(1 sealed unit, sub-divided by two rows of 22mm internal glazing bars)



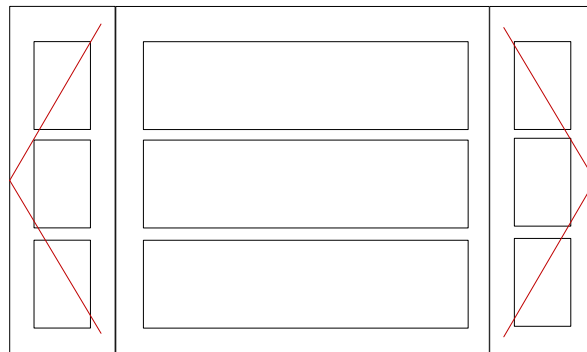
Flank Elevation Ground Floor – Cloak Room and Hall  
(each window is 1 sealed unit, sub-divided by two rows of 22mm internal glazing bars)



## Shrewsbury Park Residents' Association



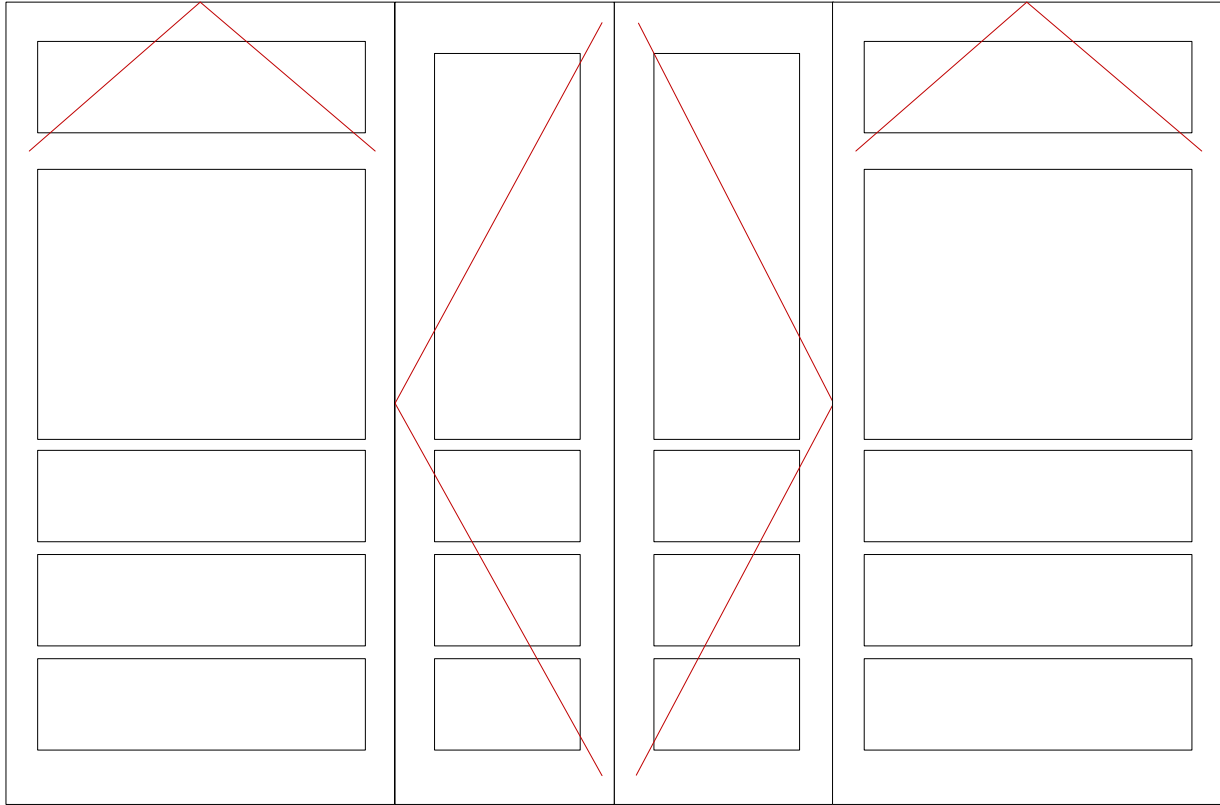
Flank Elevation Ground Floor – Kitchen Door  
(1 sealed unit, sub-divided by three rows of 22mm internal glazing bars)



Flank Elevation First Floor – Bathroom  
(3 sealed units, sub-divided by two rows of 22mm internal glazing bars)



## Shrewsbury Park Residents' Association



Rear Elevation Ground Floor – Dining Room  
(6 sealed units, four of which are sub-divided by three rows of 22mm internal glazing bars)



## Shrewsbury Park Residents' Association

- Proportions shown are reasonably accurate. However, residents should obtain verification of measurements and ask to see actual scale drawings by the window surveyor as part of the planning application and before placing an order
- Drawings are intended as illustration only to assist residents in finding a window supplier of equal sight-line design and to guide window proportion
- Drawings are a representation of a (Sutton Windows \*) even sight-line design featuring 155mm mullions and transoms, 78mm surround frame and 22mm internal glazing bars roughly 300mm apart vertically. \* Other companies are available and the Association makes no recommendations as to suppliers
- Hinge arrangements shown are as per the original Crittall windows and are as viewed externally, from the street
- Landing and hall feature windows are not shown due to complexity of decorative leadwork. Originals may be seen at 20 Ashridge Crescent
- This general design of window is applicable to 201 and 203 Plum Lane, 2 and 55 Mereworth Drive, 20, 24, 26, 30, 56 and 58 Ashridge Crescent.

If residents have any queries, please contact me using the details below.

With kind regards,

Robert Million  
Chair, Shrewsbury Park Residents' Association

Tel; 020 8854 8481  
Email; [robmillion@btinternet.com](mailto:robmillion@btinternet.com)  
Web; [www.spera.org.uk](http://www.spera.org.uk)

© Robert Million v2 3<sup>rd</sup> February 2014

Drawings remain the property of copyright holder but may be used to assist residents if so desired, at residents' own risk.

Uncontrolled when printed.